



Handheld Scanners



K-Scan MMD

K-Scan MMD is Metris' new generation handheld laser scanners for portable metrology applications. Accurate, easy-to-use and a stunning performance make it the most modern handheld scanning solution without mechanical constraints. K-Scan MMD is the ultimate tool for accurate part-to-CAD inspection and productive reverse engineering, combining the accuracy and productivity of the MMD laser scanner and the user freedom, measurement volume and motion compensation of the K-Series Optical CMM.



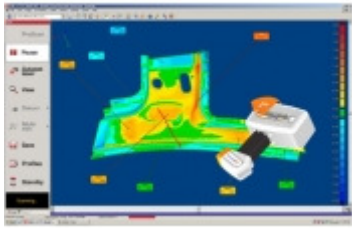
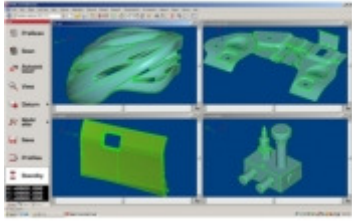
ModelMaker D

The ModelMaker D, featuring "True Digital Camera Technology", a digital handheld laser scanner is a leap forward in 3D laser scanning technology including several ground breaking innovations that have never previously been available on any laser scanner.



ModelMaker Z

The ModelMaker Z provides highly affordable handheld scanning with industry accepted functionality and performance, and is supplied with KUBE software for scanning, data processing, meshing and mesh processing. With three sensors in the range and scanning at over 23,000 points per second, you can get the right solution for your application.



KUBE Software v13

KUBE is Metris' proprietary scanning and basic inspection and reverse engineering solution. KUBE software fits all handheld laser scanning applications and is compatible with Metris MMD ([link](#)) and MMZ ([link](#)) handheld laser scanners. Furthermore, KUBE supports the four most popular localizers available on the market: Metris MCA ([link](#)), Metris K-scan ([link](#)), Faro and Cimcore.

KUBE features algorithms that have been specifically designed for processing laser stripe data, which guarantees superior data quality and accuracy. Therefore, KUBE is recognized worldwide as one of the leading software solutions for handheld scanning applications. Kube's latest V13 version boosts an immense library of point cloud tools that are based on Metris' 10+ years of laser scanning experience. Kube is intuitive software that is easy to learn.

Please Call For More Information & Pricing